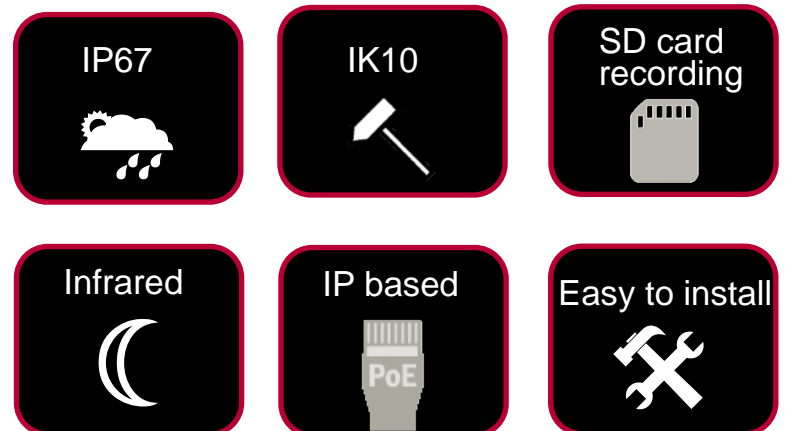


Z series | IP vandal dome

# ZR6122

## Auto Focus Outdoor Vandal Resistant IR IP Dome

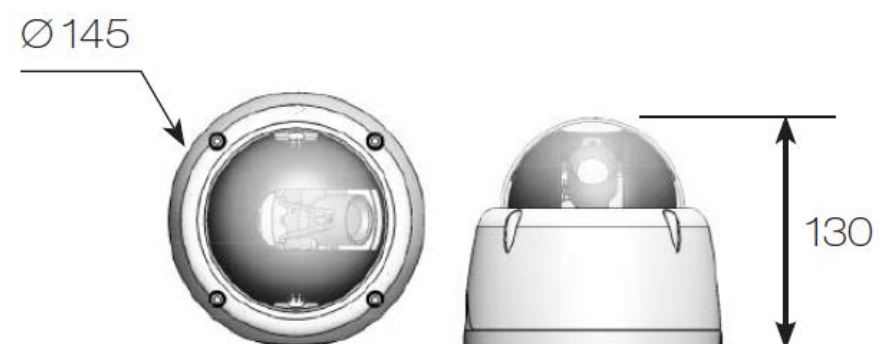
www.meritlilin.com



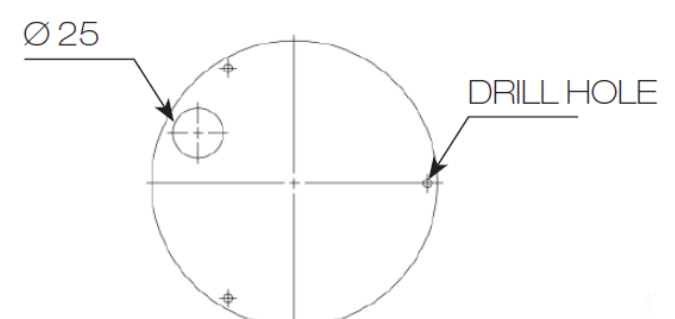
- ▶ Outdoor Vandal Dome
- ▶ Powerful Auto Focus feature
- ▶ IP67 rain and dust resistant
- ▶ IK10 impact resistant
- ▶ 25-metre infrared night vision
- ▶ 1080p resolution

### Dimensions:

Ø145 x 130mm



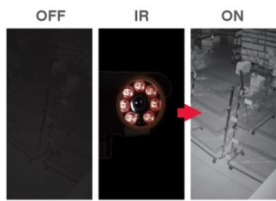
### Diagram of mounting holes:



- © Vandal-proof dome cameras are waterproof and equipped with wide viewing angle (29.8° to 79.3° ), therefore domes can be mounted in the corner of a large room and still able to see everything.
- © Day/night domes not only provide quality colour pictures by day, but also with on-board 25-metre IR LED to ensure clear monochrome vision at night.
- © Vandal domes with high performance imaging is the popular choice for the majority of commercial and residential premises

Built-in IR Illumination

ZR6122 IP camera with infrared (IR) illumination where IR LEDs are built-in. Built-in with IR LED, the camera provides night vision up to 25 metres



Video Security App

Available on Android and iOS – **LILINViewer** app provides security alarm push notification, real-time live viewing, and remote video playback



SD Cards in Sync with NAV Software

ZR6122 camera with built-in Micro SD/SDHC card slots can provide redundant video viewing and recording. You can synchronize an SD card with LILIN VMS (Video Management Software) – Navigator (NAV)



Wind and Rain Standards

Meet international IP67 standards for dust and moisture resistant allowing you to install cameras in environments subject to wind and rain



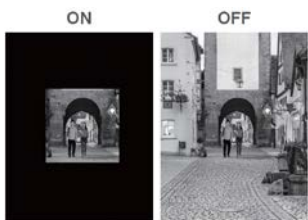
3D Noise Reduction

Remove noise from a signal. Suppressing noise in an image in low light conditions and able to retain quality videos at the same time



Region of Interest (ROI)

A Region of Interest (ROI) is a specified part of an image that is highlighted from a camera. This feature is great for highlighting areas such as doors or areas of access where an overall scene is still required



ONVIF-compliant

Open Network Video Interface Forum (ONVIF) is a standard for physical IP based security products. ZR6122 camera is ONVIF Profile S conformant



Alarm Detection

Alarm Detection is designed to provide the electronic detection of intruders



Motion Detection

Detect motion and capture the event. Motion in the selected area will provoke an alert.



Auto Focus feature

Use the camera software to trigger the auto focus function at any time during installation or after. Auto Focus feature to automatically focus the camera from a distant location, which eases the process on installation and helps you effectively position the camera at the right focus angle in a matter of seconds



Day and Night Operations via Removal of the IR-cut filter

ZR6122 camera was designed using a mechanical IR cut filter for increased IR sensitivity resulting in improved night time images. The removable IR-cut filter allows day and night operations even in the low lux condition providing outstanding vision



Sense Up+

Deliver outstanding video outputs in poor light conditions without experiencing motion blur. You can see video clearly even during nighttime without sufficient lighting support



Impact Resistant

IK10-certified housing designed to protect the camera from destructive behaviour



Wide Dynamic Range (WDR)

Wide Dynamic Range (WDR) displays details of both the brightest and darkest areas. WDR can extend image visibility under high contrast lighting scenes and improve image quality



Privacy Masking

Privacy Masking is a feature used to protect personal privacy by concealing private areas in the camera's field of view. Doorways and house windows for example are not subject to surveillance



Audio Detection

With Audio Detection technology, an alarm is triggered based on ambient sound conditions as the threshold



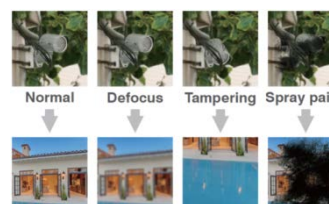
Face Detection

Automatically detects a human face



Tamper Detection

Automatically detects camera sabotage or failure. Detects any attempts to tamper with the camera – partially or completely blocking its lens or field of view





Auto Focus Outdoor Vandal Resistant IR IP Dome

Video performance	
Model#	ZR6122EX3
Low Light Mode (Colour)	0.02 lux at F1.4
With Infrared	0.0 lux
2D WDR	Off / Auto / x2 / x3/ x4 (by normal mode)

Power	
Power consumption	DC12V, 10W / PoE, 11.2W
PoE	IEEE802.3af
Power supply	DC12V ±10%
	Power over Ethernet (IEEE 802.3af compliant)

Sensor	
Sensor type	1/2.8-inch CMOS image sensor
Total sensor pixels	1984 (H) x 1105 (V) = 2,192,320 pixels

Certifications	
CE	EN 55022: 2010 Class A IEC 61000-3-2: 2005+A1: 2008+A2: 2009 IEC 61000-3-3: 2008
FCC	FCC Part 15: Subpart B (10-1-10 Edition) Class A CISPR 22: 2008 Class A
UL	60950-1 – Information Technology Equipment – Safety Part 1: General Requirements CSA C22.2 No. 60950-1-07-Information Technology Equipment-Safety-Part 1: General Requirements
Vandal resistant rating	IK10 impact resistant
IP Rating	IP67 waterproof

Lens		
Focal length		2.8mm ~ 12 mm (zoom / focus motorized)
Iris		F1.4
Angle of View	H	91.2° ~ 25.5°
	V	68.4° ~ 19.1°
	D	114° ~ 31.9°

Night vision (infrared LED)	
Distance	25m
Peak wavelength	850nm, high efficiency array
Beam spread	30°

Environmental	
Operating temperature	-40℃ to 50℃ (-40°F to 122°F)
PC requirement	
CPU	Intel Pentium 4 1.8GHz or above
OS	Windows 2000, Windows XP, Windows Vista, Windows 7, Windows 8
RAM	1GB or above, Independent Display Card

Mechanical	
Dimensions	Ø 145 x 130mm
Weight	1000g approx.

Input / output	
Audio input / output	Mono, 1.4 Vp-p , 50 KΩ , terminal connector
Alarm input / output	Digital 1 input (TTL, +3 – 5VDC) / 1 Output (MOS Relay contact N.O., Load max. 40VDC/300mA)
Live video output	CVBS 1.0Vp-p, 75 ohm, RCA connector

Network security	
User accounts	10 users accounts available
Access	Multiple user access levels with password protection
Encryption	Base 64 HTTP encryption

Video streaming	
Video compression	H.264 , Motion JPEG
Streaming	RTP/HTTP, RTP/TCP, RTP/UDP, Multicast Multiple configurable streams in H.264 and M-JPEG, configurable frame rate and bandwidth
Bitrate	128Kbps to 8Mbps Frame rate and bitrate controllable on-the-fly VBR / CBR / GOP supported
IP filter	Yes
RTSP Authentication	On / Off

Video resolution (H x V)		
1080p HD		1920 x 1080
720p HD		1280 x 720
D1		720 x 480
CIF		352 x 240
Multiple profile	Profile #1	H.264 : up to 30 FPS @ 1920 x 1080, MJPEG : up to 30 FPS @ 720 x 480
	Profile #2	H.264 : up to 30 FPS @ 1280 x 720, MJPEG : up to 30 FPS @ 352 x 240
	Profile #3	H.264 : up to 30 FPS @ 1920 x 1080, MJPEG : up to 30 FPS @ 1280 x 720
	Profile #4	H.264 : up to 30 FPS @ 720 x 480, MJPEG : up to 15 FPS @ 1920 x 1080

Video functions	
Day/Night (IR-cut filter)	Colour (Day), Monochrome (Night), Auto, Schedule
Scanning system	Progressive scan
Auto Focus	One push
Adjustable picture setting	Contrast, Brightness, Saturation
White balance	Auto / Tungsten / Indoor / Fluorescents1 / Fluorescents2 / Outdoor1 / Outdoor2
Shutter	1/30(1/25)s to 1/8000s
Back light compensation	On / Off
3D noise reduction	Off / 1 to 32 selectable
Privacy masking	Four independent areas
Sense Up	Off / 1 frame / 2 frames / 3 frames / 7 frames
Sense Up+	Yes
Auto gain control	36 dB variable gain
Other functions	Sharpness, Image flip, Image mirror, Defog, Hue
D/N quality setting	Yes

Integration	
Mobile application	Integrated to LILIN mobile app (LILINViewer) iPhone, iPad, Android support
Video management	ONVIF Profile S LILIN NAV 1.0 Third party VMS through LILIN HTTP API
SD card recording	Support Micro SD/SDHC card for circular recording (card is not included)
Web browser	Microsoft® Internet Explorer® 6.0 and later
Firmware	Firmware upgrade via HTTP
Alarm functions	Face / tampering / audio / motion / alarm detection
Alarm event	FTP,SMTP, HTTP post, SD card, SAMBA
Alarm weighted mode	Yes

Network	
Ethernet	10Mbps / 100Mbps Base-T, RJ-45
Connectivity	ONVIF Profile S
Users	8 simultaneous users
ePTZ & digital zoom	Yes, ROI (Region of Interest) is supported
OSD	Text overlay for date, time and camera name
CPU, Memory	Embedded SoC ARM11, 528MHz, 256MB DDR2, 256MB flash memory
Video display	LILIN Universal ActiveX & LILIN Java Applet
OS	Embedded Linux 2.6.32
2-way audio	G.711 / PCM
Protocols	IPv4, IPv6, TCP, UDP, HTTP, SMTP, NTP, DDNS, UPnP, FTP, ARP, DHCP, PPPoE, DNS, RTSP, RTCP, Telnet, ICMP, IGMP, ONVIF Profile S, SNMP, SIP, Bonjour
Multi IP address	Yes