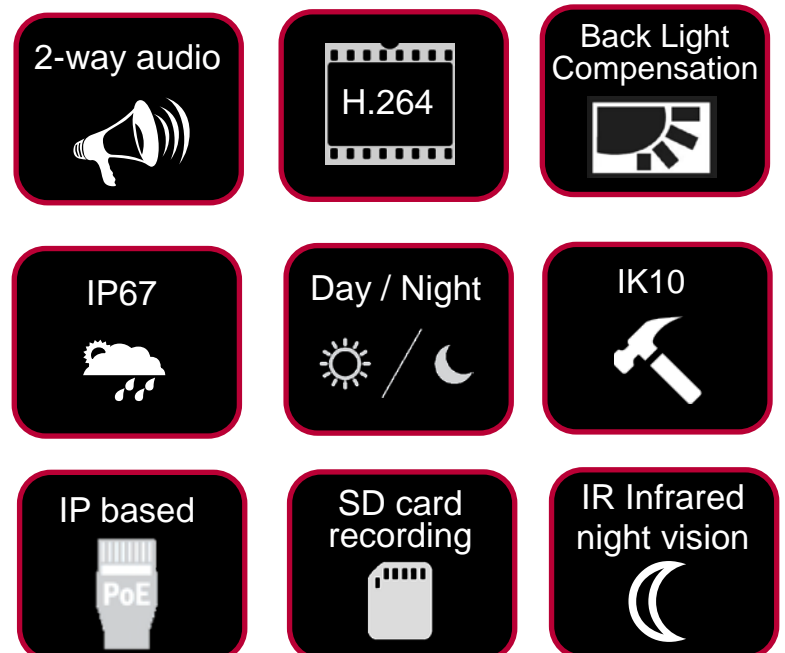


Pro series | Outdoor Vandal Dome Camera

IPR6132X

Day & Night 3MP HD Vandal Dome IR IP Camera

www.meritlilin.com



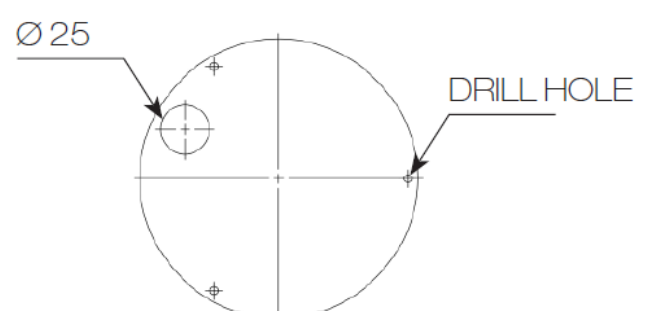
- ▶ Outdoor vandal dome
- ▶ IP67 rain and dust resistant
- ▶ Wide Dynamic Range
- ▶ IK10 impact resistant
- ▶ On-board Infrared lights – The camera can view up to 25 metres at night
- ▶ IR cut filter for day/night operations
- ▶ 3-megapixel video resolution

Dimensions (unit in mm):

Ø145 x 130



Diagram of mounting holes (unit in mm):



As with all Pro series cameras, IK10 vandal resistant rating Day & Night 3MP HD vandal resistant dome IR IP camera IPR6132X incorporates Sense up+, a unique technology that successfully delivers stunning video in low-light conditions. Featuring high-efficiency IR-LEDs provide 25 meters of light. Utilizing intelligent image signal processing, AGC control, and 3D Noise Reduction, this model successfully delivers the ultimate low-light image without motion blur. The IPR6132X is capable of producing four independent video streams, different streams can be set for different applications, depending on the individual user requirements. The IP67-rated housing is designed to help the camera body withstand rain and dust and ensures operation under a multitude of harsh weather conditions.

Wind and Rain Standards

Meet international IP67 standards for dust and moisture resistant allowing you to install cameras in environments subject to wind and rain



Sense Up+

Deliver outstanding video outputs in poor light conditions without experiencing motion blur. You can see video clearly even during nighttime without sufficient lighting support



Video Security App

Available on Android and iOS – LILINViewer app provides security alarm push notification, real-time live viewing, and remote video playback



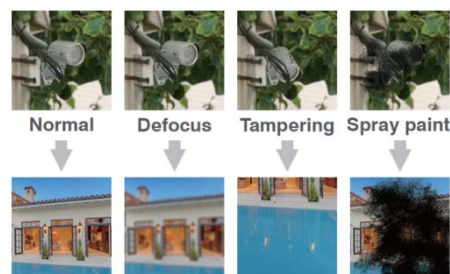
ONVIF-compliant

Open Network Video Interface Forum (ONVIF) is a standard for physical IP based security products. IPR6132X camera is ONVIF Profile S conformant



Tamper Detection

Automatically detects camera sabotage or failure. Detects any attempts to tamper with the camera – partially or completely blocking its lens or field of view



SD Cards in Sync with NAV Software

IPR6132X camera with built-in Micro SD/SDHC card slots can provide redundant video viewing and recording. You can synchronise an SD card with LILIN VMS (Video Management Software) – Navigator (NAV)



Two-way Audio Support

With 2-way audio communication, you can project your voice through the camera's speaker instead of hearing what's going on (1-way audio)



Impact Resistant

IK10-certified housing designed to protect the camera from destructive behaviour



Face Detection

Automatically detects a human face



Day and Night Operations via Removal of the IR-cut filter

IPR6132X camera was designed using a mechanical IR cut filter for increased IR sensitivity resulting in improved night time images. The removable IR-cut filter allows day and night operations even in the low lux condition providing outstanding vision



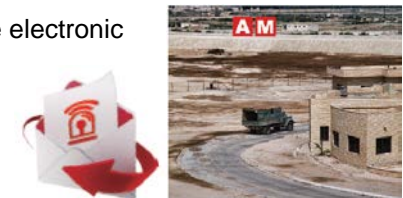
Motion Detection

Detect motion and capture the event. Motion in the selected area will provoke an alert



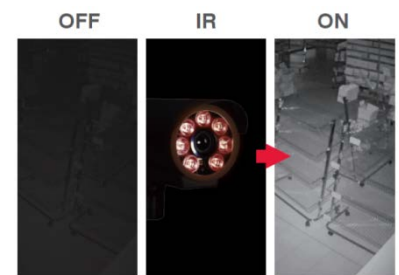
Alarm Detection

Alarm Detection is designed to provide the electronic detection of intruders



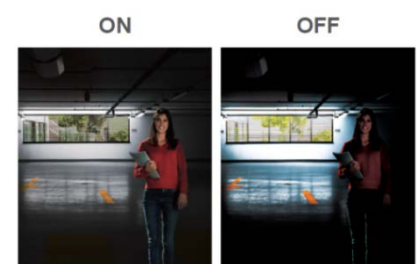
IR Infrared Night Vision

Infrared options with built-in LEDs that are able to see in almost complete darkness, providing clear, detailed video clarity at night-time for round-the-clock video surveillance



Wide Dynamic Range

An Wide Dynamic Range image is made by taking 3 frames of the same scene and each at different shutter speeds to display details of both the darkest and brightest areas. WDR can extend image visibility under high contrast lighting scenes and improve image quality



Day & Night 3MP HD Vandal Dome IR IP Camera

Video performance & power	
Model#	IPR6132ESX3.6
Low Light Mode (Colour)	0.15 Lux at F1.4 (Low Light Mode) / 0 Lux with IR LED ON
Power consumption	DC12V, 9W / PoE, 10.2W
Power supply	DC12V ±10% / PoE (IEEE 802.3af compliant)

Lens		
Focal length	2.8～12 mm	
Iris	F1.4	
Angle of view	H	91.2° ～25.5°
	V	59.4° ～22.4°
	D	99° ～37.3°

Sensor	
Sensor type	1/2.8" CMOS image sensor
Effective pixels	2096 (H) x 1561 (V) = 3,271,856 (pixel)

Certifications	
CE	Yes
FCC	Yes
IP rating	IP67 waterproof
IK rating	IK10 vandalproof

PC requirement	
CPU	Intel Pentium 4 1.8GHz or above
OS	Windows 2000 , Windows XP , Windows Vista, Windows 7, Windows 8
RAM	1GB or above ,Independent Display Card
Web browser	Microsoft® Internet Explorer® 6 and later

Mechanical	
Dimensions	Ø145 x 130mm
Weight	1000g approx.

Input / output	
Live video output	CVBS 1.0Vp-p, 75 ohm, RCA connector
Audio input / output	Mono, 1.4 Vp-p , 50 KΩ , terminal connector
Alarm input / output	Digital 1 input (TTL, +3～5VDC) / 1 Output (MOS Relay contact N.O., Load max. 40VDC/300mA)

Video sreaming	
Video compression	H.264 , Motion JPEG
Streaming	RTP/HTTP, RTP/TCP, RTP/UDP, Multicast
Bitrate	128Kbps～8Mbps Frame rate and bit rate controllable on-the-fly VBR / CBR / GOP supported
IP filter	Yes
RTSP Authentication	On / Off

Network security	
User accounts	10 user accounts available
Access	Multiple user access levels with password protection
Encryption	Base 64 HTTP encryption

Night vision (infrared LED)	
Distance	25m
Peak wavelength	850nm
Beam spread	30°

Video resolution (H x V)		
3MP		2048 x 1536
1080P		1920 x 1080
720P		1280 x 720
D1		720 x 480
CIF		352 X 240
Multiple profile	Profile #1	H.264 : up to 30 FPS @ 1920 x 1080, MJPEG : up to 30 FPS @ 720 x 480
	Profile #2	H.264 : up to 30 FPS @ 1280 x 720, MJPEG : up to 30 FPS @ 352 x 240
	Profile #3	H.264 : up to 30 FPS @ 1920 x 1080, MJPEG : up to 30 FPS @ 1280 x 720
	Profile #4	H.264 : up to 30 FPS @ 720 x 480, MJPEG : up to 15 FPS @ 1920 x 1080
	Profile #5	H.264 : up to 15 fps @ 2048 x 1536 , MJPEG : up to 15 fps @ 720 x 480

Video functions	
Day/Night (IR-cut filter)	Colour (Day), Monochrome (Night), Auto, Schedule
Scanning system	Progressive scan
White balance	Auto / tungsten / indoor / fluorescents1 / fluorescents2 / outdoor1 / outdoor2
Electronic shutter	1/30(1/25)s～1/8000s
Back light compensation	Off / On
Privacy masking	Off / on (4 zones)
Auto gain control	36 dB variable gain
Image effects	Brightness, Contrast, Hue, Saturation, Sharpness, Mirror, Flip
2D WDR	Off / Auto / x2 / x3 / x4
D/N quality setting	Yes

Integration	
Mobile application	Integrated to LILIN mobile app (LILINViewer) iPhone, iPad, Android support
Video management	ONVIF Profile S LILIN CMX3.6 NAV 1.0 Third party VMS through LILIN HTTP API
Firmware	Firmware upgrade via HTTP Firmware available to download at meritlilin.com

Network	
Ethernet	10Mbps / 100Mbps Base-T, RJ-45
Connectivity	ONVIF Profile S
Users	8 simultaneous users
OSD	Text overly for date, time , and camera name
CPU, Memory	Embedded SoC ARM11, 528MHz, 256MB DDR2, 256MB flash memory
Video display	LILIN Universal ActiveX & LILIN Java Applet
OS	Embedded Linux 2.6.32
2-way audio supported	G.711 / PCM
Protocols	IP, TCP, UDP, HTTP, SMTP, NTP, DDNS, UPnP, FTP, ARP, DHCP, PPPoE, DNS, RTSP, RTCP, Telnet, ICMP, IGMP, ONVIF Profile S, SNMP, SIP, Bonjour
Multi IP address	Yes

Main functions	
Sense up	Off / 1 frame / 2 frames / 3 frames / 7 frames
Sense up +	Yes
3D Noise Reduction	Off / 1～32 selectable
Alarm function	Face / tampering / audio / motion / alarm detection
	Image upload over FTP and E-mail by face / tampering / audio / motion detection
SD card recording	Support Micro SD/SDHC card for circular recording (card is not included)
ePTZ & digital zoom	Yes, ROI is supported
Alarm event	FTP,SMTP, HTTP post, SD card, SAMBA
Alarm weighted mode	Yes

Environmental	
Operating temperature	-40°C～+50°C (-40°F～122°F)